

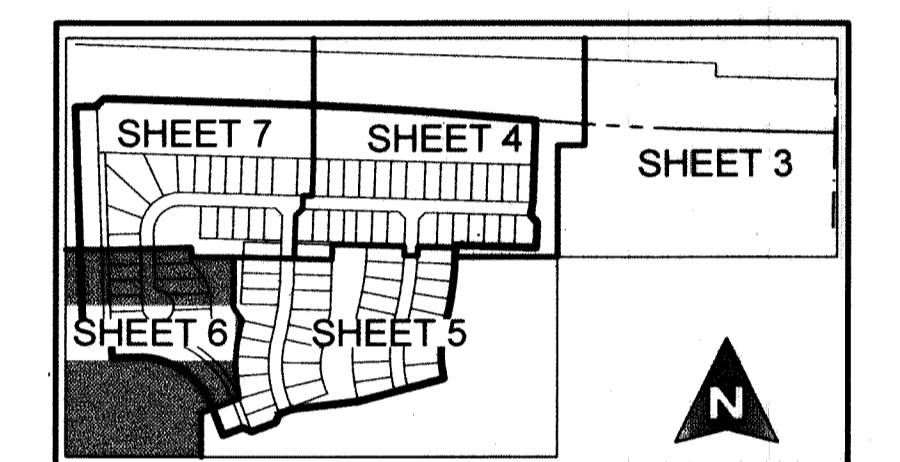
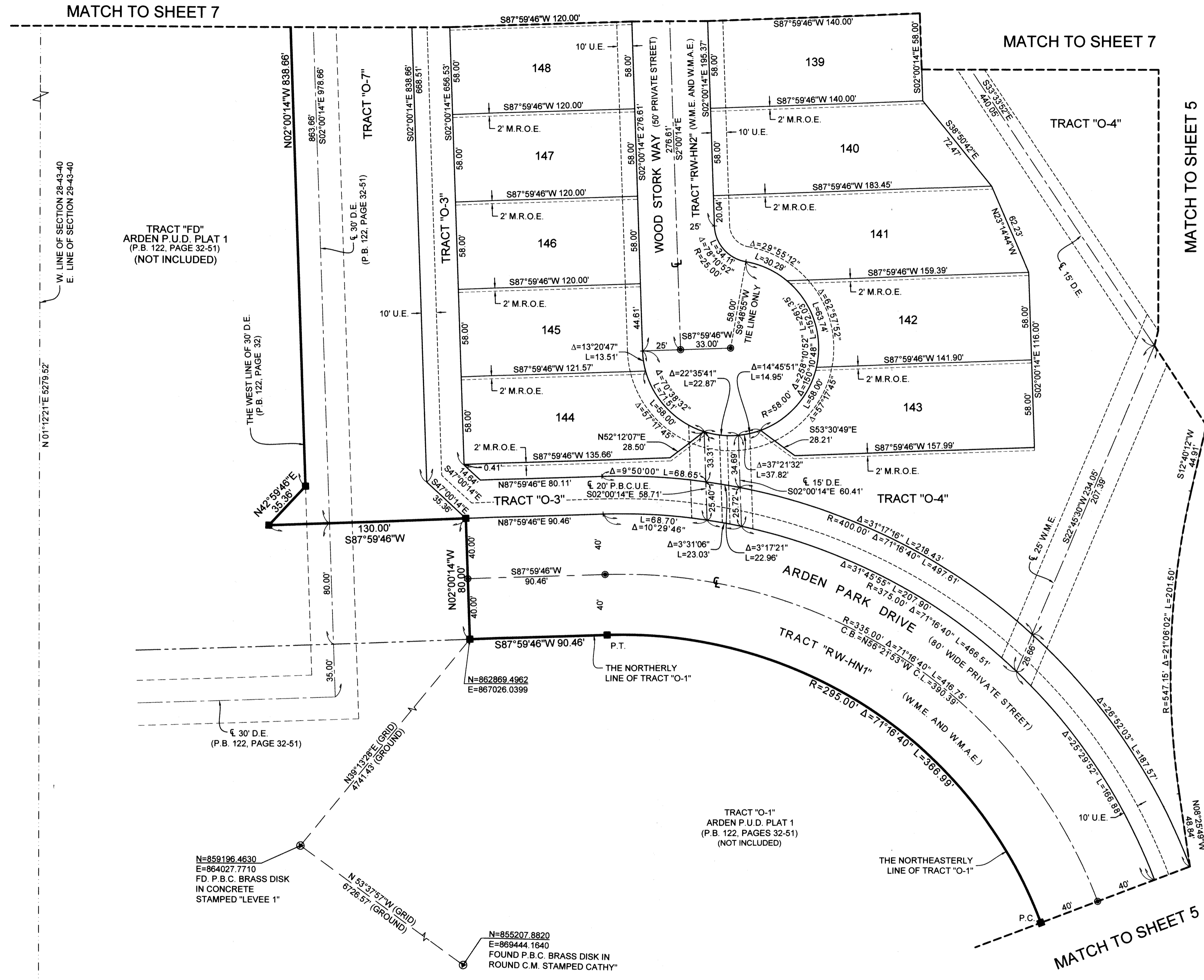
# ARDEN P.U.D. POD H NORTH

BEING A REPLAT OF A PORTION OF TRACT "FD", ARDEN P.U.D. PLAT 1, AS RECORDED IN PLAT BOOK 122, PAGES 32 THROUGH 51, PUBLIC RECORDS OF PALM BEACH COUNTY, FLORIDA, AND LYING IN SECTION 28, TOWNSHIP 43 SOUTH, RANGE 40 EAST, PALM BEACH COUNTY, FLORIDA.

**PREPARING SURVEYOR & MAPPER'S STATEMENT**

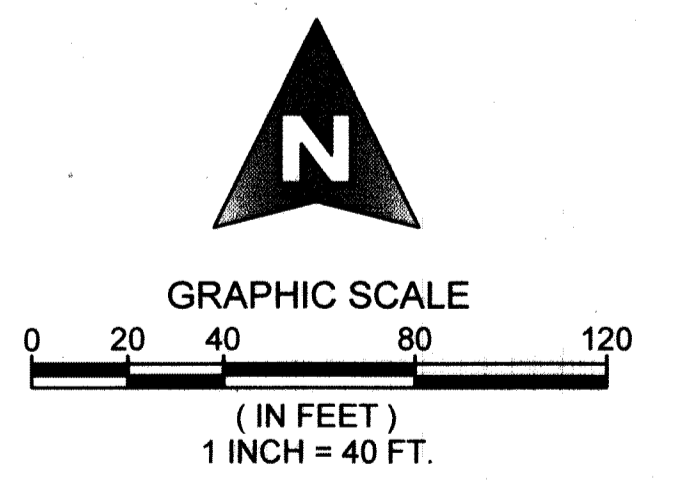
THIS INSTRUMENT WAS PREPARED BY LESLIE C. BISPOTT, P.S.M. OF MICHAEL B. SCHORAH AND ASSOCIATES, INC., 1850 FOREST HILL BOULEVARD, SUITE 206, WEST PALM BEACH, FLORIDA, 33406.

52



KEY MAP NOT TO SCALE

**COORDINATE NOTE:**  
 STATE PLANE COORDINATES SHOWN ARE GRID DATUM, NAD 83 1990 ADJUSTMENT, FLORIDA EAST ZONE, COORDINATE SYSTEM 1983 STATE PLANE, TRANSVERSE MERCATOR PROJECTION  
 LINEAR UNIT = US SURVEY FEET  
 ALL DISTANCES ARE GROUND  
 SCALE FACTOR = 0.99999219  
 GROUND DISTANCE X SCALE FACTOR = GRID DISTANCE  
 BEARINGS AS SHOWN HEREON ARE GRID DATUM, NAD 83 1990 ADJUSTMENT, FLORIDA EAST ZONE.



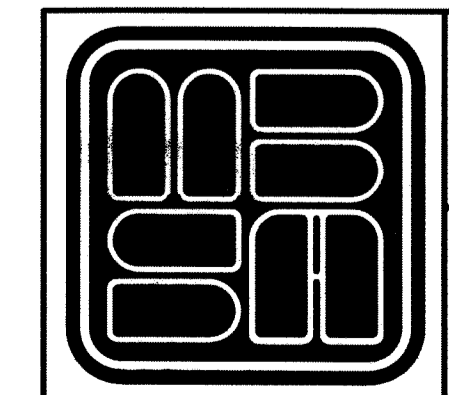
SW CORNER OF SECTION 28, TOWNSHIP 43 S., RANGE 40 E. N=858724.7450, E=864134.0560 NOT FOUND (P.B.C. POSITION)

S. LINE OF SECTION 28-43-40 N. LINE OF SECTION 33-43-40

TRACT "O-1" ARDEN P.U.D. PLAT 1 (P.B. 122, PAGES 32-51) (NOT INCLUDED)

N=859196.4630 E=864027.7710 FD. P.B.C. BRASS DISK IN CONCRETE STAMPED "LEVEE 1"

N=855207.8820 E=869444.1640 FOUND P.B.C. BRASS DISK IN ROUND C.M. STAMPED "CATHY"



**MICHAEL B. SCHORAH & ASSOCIATES, INC.**  
 1850 FOREST HILL BLVD., SUITE 206  
 WEST PALM BEACH, FLORIDA 33406  
 EB# 2438 TEL. (561) 968-0080 FAX. (561) 642-9726 LB# 2438